

Light efficiency:

109 Lumen/Watt

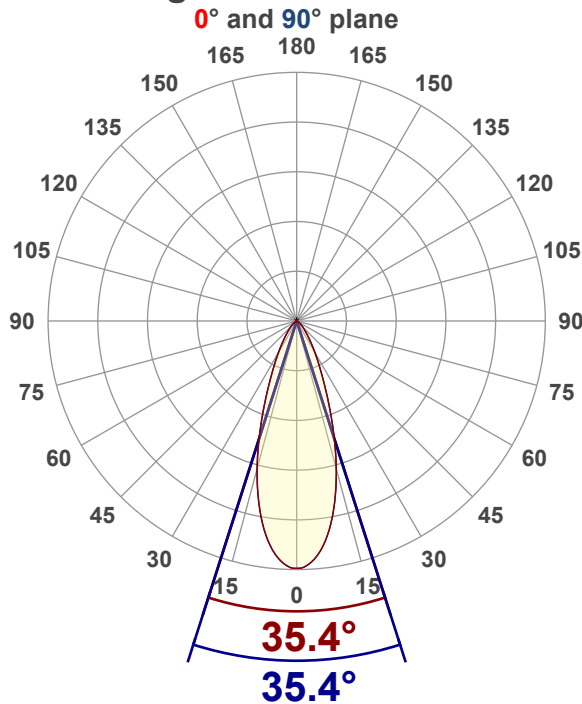
Color temperature:

3422 K

Light quality:

CRI:97.1, R_g:91.8, R_f:100.6**P: 2 / V: - / F: 2****Output: 1198 lm****Peak: 2534 cd****Power: 11.0 W****Voltage: 120 V****Current: 0.094 A****PF: 0.97****THD: 14.69 %**

Angular Distribution



Product name:

RA4-12G-90WH - 3500K

Test Date:

12/12/2025

Beam Angle (50% of the brightness of the centre):

35.4°

Field Angle (10% of the brightness of the centre):

67.6°

Cut Off Angle (2.5% of the brightness of the centre):

96.1°

Beam Details

*measured at centre of beam

Mounting Height (feet)\(meter)	Lux*	Footcandles*	Beam width (feet) / (meter)
4 ft / 1.2 m	1705 lx	158 fc	2.6 ft / 0.8 m
8 ft / 2.4 m	426 lx	40 fc	5.1 ft / 1.6 m
12 ft / 3.7 m	189 lx	18 fc	7.7 ft / 2.3 m
16 ft / 4.9 m	107 lx	10 fc	10.2 ft / 3.1 m
20 ft / 6.1 m	68 lx	6 fc	12.8 ft / 3.9 m

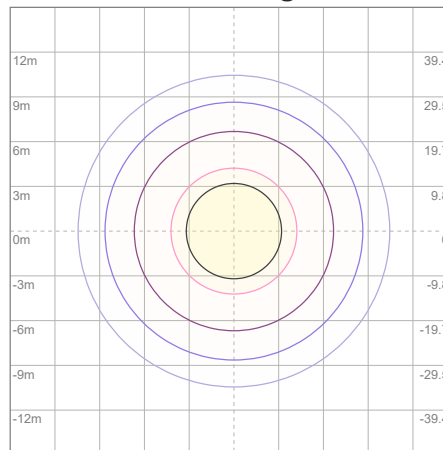
Beam center

Photometric Testing Report

Zonal Lumen Summary

Zone	Lumen	%Luminaire
0-30	933	77.88%
0-40	1078	89.98%
0-60	1174	98.00%
60-90	22.1	1.84%
70-100	7.91	0.66%
90-120	0.607	0.05%
0-90	1196	99.83%
90-180	1.82	0.15%
0-180	1198	100.00%

ISO Lux Diagram



Lux at center:	272 lx
3%	8.16 lx
5%	13.60 lx
10%	27.20 lx
30%	81.60 lx
50%	136.00 lx

Conditions:

Number of planes: 8

Lux distribution on a surface when lamp is mounted at 3.05 meters from the surface.

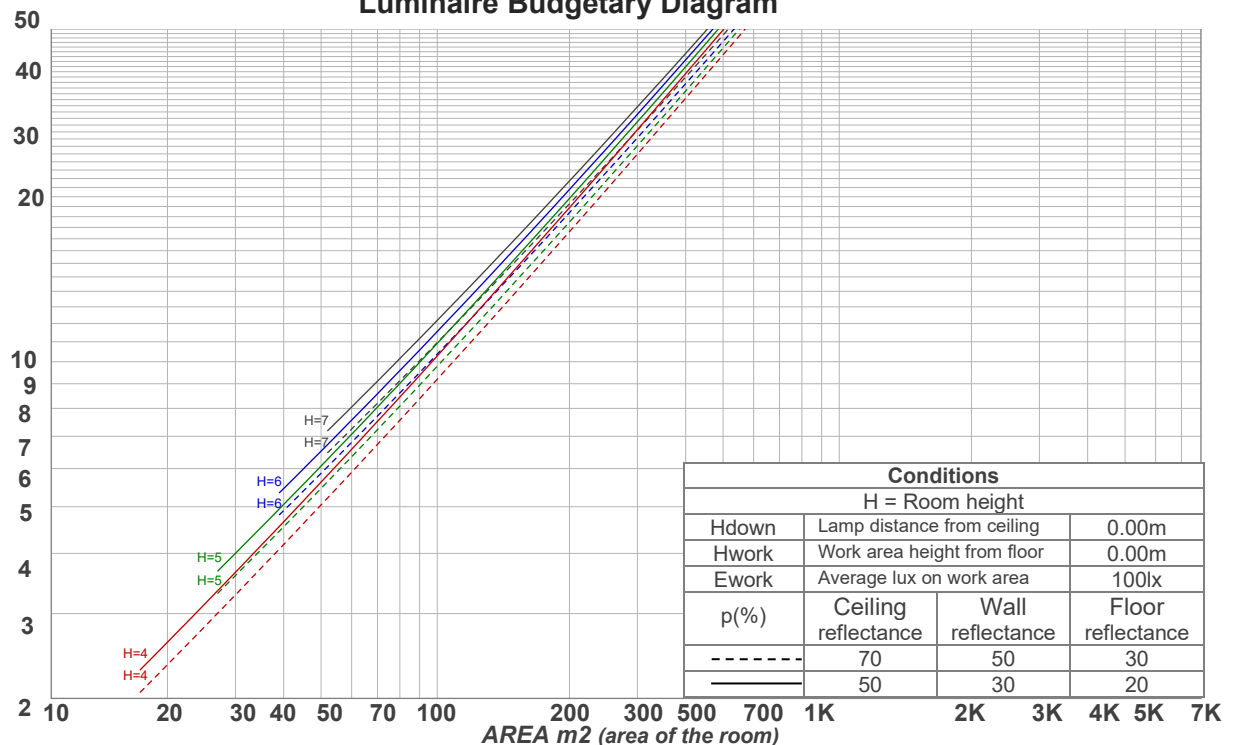
Mounting height: 3.05 meters (10 feet)

Coefficients of Utilization

Ceiling reflectance	80				70				50			30			10			0
Wall reflectance	70	50	30	10	70	50	30	10	50	30	10	50	30	10	50	30	10	0
Floor reflectance	20	20	20	20	20	20	20	20	20	20	20	20	20	20	20	20	20	0
RCR	(RCR: Room Cavity Ratio) Room Values are expressed as percentage of Lumens delivered to the task surface																	
0	119	119	119	119	116	116	116	116	111	111	111	106	106	106	102	102	102	100
1	114	111	109	106	111	109	107	105	105	103	102	101	100	98	98	97	96	94
2	108	104	100	97	106	102	99	96	99	96	94	96	94	92	93	91	90	88
3	103	97	93	89	102	96	92	88	93	90	87	91	88	85	89	86	84	83
4	99	92	87	83	97	91	86	82	88	84	81	87	83	80	85	82	79	78
5	94	87	81	77	93	86	81	77	84	80	76	82	79	76	81	78	75	74
6	90	82	77	73	89	81	76	72	80	75	72	79	75	71	77	74	71	70
7	87	78	73	69	85	77	72	69	76	72	68	75	71	68	74	70	67	66
8	83	74	69	65	82	74	69	65	73	68	65	72	68	64	71	67	64	63
9	80	71	66	62	79	71	65	62	70	65	62	69	65	61	68	64	61	60
10	77	68	63	59	76	68	62	59	67	62	59	66	62	59	65	61	59	57

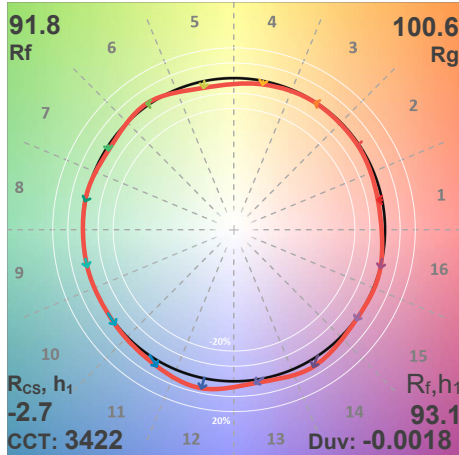
LAMPS (number of lamps)

Luminaire Budgetary Diagram

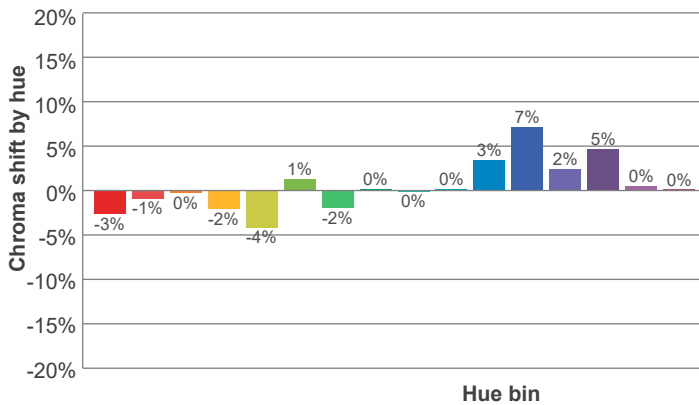
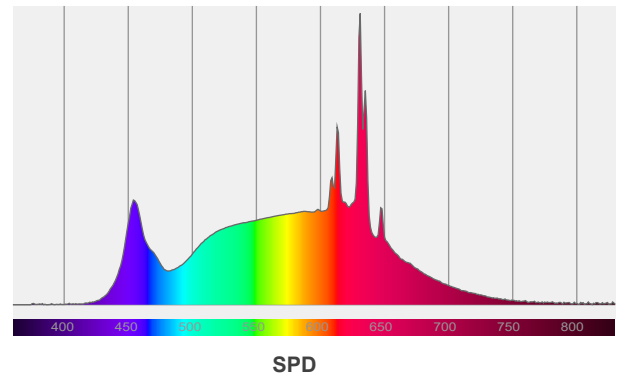
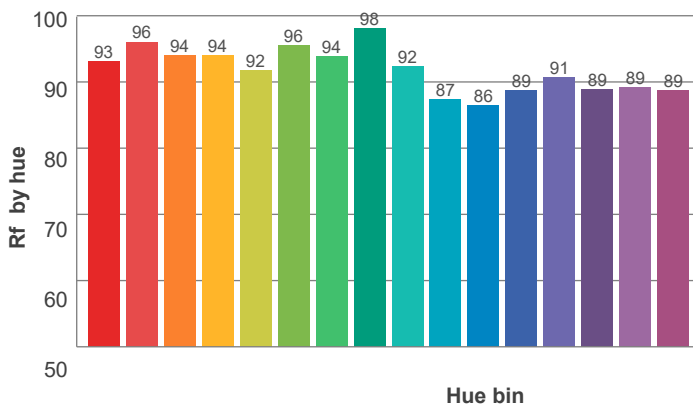
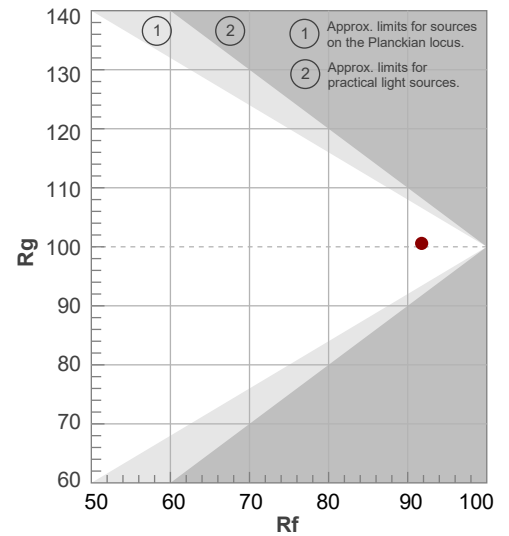


ANSI/IES TM-30-18

P: 2 / V: - / F: 2



Hue Bin	R _f	Shifts (%)	
		Chroma	Hue
1	93	-3%	1%
2	96	-1%	1%
3	94	0%	2%
4	94	-2%	0%
5	92	-4%	1%
6	96	1%	2%
7	94	-2%	2%
8	98	0%	1%
9	92	0%	5%
10	87	0%	9%
11	86	3%	8%
12	89	7%	-1%
13	91	2%	-6%
14	89	5%	-7%
15	89	0%	-5%
16	89	0%	-6%



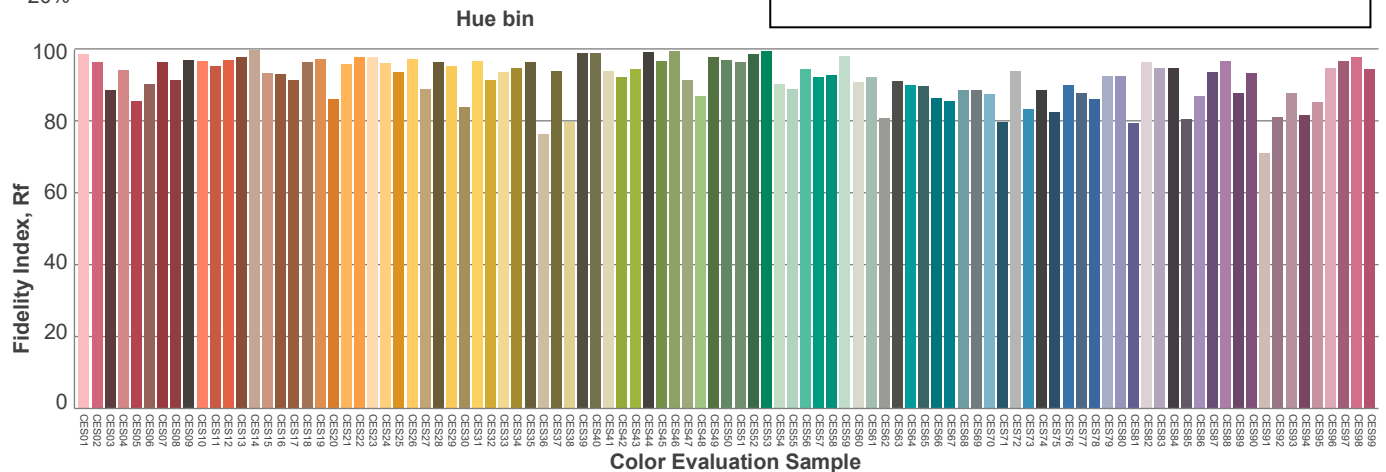
Red: 30.4%, Power=6.0mW

Blue: 12.9%, Power=9.9mW

Green: 28.3%, Power=15.6mW

UVA: 0.1%, Power=0.2mW

Dominant Wavelength: 583nm

1st Peak Wavelength: 631nm2nd Peak Wavelength: 613nm

Glare Evaluation According to UGR

p Ceiling		70	70	50	50	30	70	70	50	50	30
p Walls		50	30	50	30	30	50	30	50	30	30
p Floor		20	20	20	20	20	20	20	20	20	20
Room size X Y		Viewing direction at right angles to lamp axis					Viewing direction parallel to lamp axis				
2H	2H	21.6	22.2	21.7	22.4	22.6	21.6	22.2	21.7	22.4	22.6
	3H	21.7	22.4	22.0	22.6	22.8	21.7	22.4	22.0	22.6	22.8
	4H	21.7	22.4	22.1	22.6	22.9	21.7	22.4	22.1	22.6	22.9
	6H	21.8	22.4	22.1	22.7	23.0	21.8	22.4	22.1	22.7	23.0
	8H	21.8	22.3	22.1	22.7	23.1	21.8	22.3	22.1	22.7	23.1
	12H	21.7	22.3	22.1	22.6	23.1	21.7	22.3	22.1	22.6	23.1
4H	2H	21.5	22.2	21.9	22.4	22.6	21.5	22.2	21.9	22.4	22.6
	3H	21.8	22.3	22.1	22.7	23.1	21.8	22.3	22.1	22.7	23.1
	4H	21.8	22.3	22.3	22.8	23.3	21.8	22.3	22.3	22.8	23.3
	6H	21.9	22.4	22.4	22.8	23.1	21.9	22.4	22.4	22.8	23.1
	8H	21.9	22.4	22.4	22.7	23.1	21.9	22.4	22.4	22.7	23.1
	12H	21.9	22.2	22.4	22.7	23.1	21.9	22.2	22.4	22.7	23.1
8H	4H	21.8	22.3	22.3	22.6	23.0	21.8	22.3	22.3	22.6	23.0
	6H	21.9	22.3	22.4	22.7	23.3	21.9	22.3	22.4	22.7	23.3
	8H	22.0	22.3	22.5	22.8	23.4	22.0	22.3	22.5	22.8	23.4
	12H	22.0	22.2	22.6	22.7	23.3	22.0	22.2	22.6	22.7	23.3
12H	4H	21.8	22.1	22.3	22.5	23.0	21.8	22.1	22.3	22.5	23.0
	6H	22.0	22.2	22.5	22.7	23.4	22.0	22.2	22.5	22.7	23.4
	8H	22.0	22.2	22.6	22.7	23.3	22.0	22.2	22.6	22.7	23.3
Variation of the observer position for the luminaire distance S											
S = 1.0H		2.5 / -2.3					2.5 / -2.3				
S = 1.5H		4.6 / -3.2					4.6 / -3.2				
S = 2.0H		6.3 / -3.9					6.3 / -3.9				
Standard table		n/a					n/a				
Correction summand		n/a					n/a				
Corrected glare indices referring to 1198 lm total luminous flux											